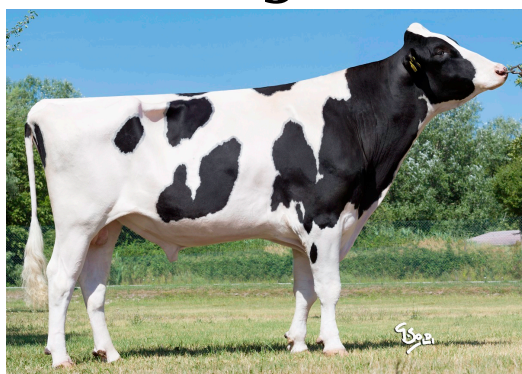


Cambridge



RR CAMBRIDGE

TL TV TY CF
 HH1F HH2F HH3F HH4F HH5F HH6F
 DE000357545439 - NAAB 198HO02039 - aAa: **342516**
COMMANDER x MAXIM x SHOTTLE
 1st Dam: RR ELUISA 955 **VG 88**
 2nd Dam: RR ELISA 44 **EX 90**



ONE OF THE BEST DAUGHTER PROVEN BULL FOR MORPHOLOGY AND UDDERS BY FAR

Production and type, excellent udders, great milkability and udder health.

USE ON: Prince, Milito, Savoia, Duko, Ventus, Galactico, Glorioso, Duomila, Brasileiro. Poison, Supershot, Supersire, Josuper, Mincio, Epic, Doorman, Twist, Surefire, Tabasco.

Last update: 2020 December

GPFT: +3657		IES: +683		ICS-PR: +492	
Production		Conformation		Management Traits	
Milk	+1013	Type	+2,29	Sire calving ease	98
Pr. %	+0,18	Udder comp.	+3,51	Daughter calving ease	108
Pr. kg	+54	Feet & Legs comp.	+1,98	Milking speed	107
Fat %	+0,11	Rel. %	93	SCS	103
Fat kg	+51	Milk qualities		Udder health	103
Daughters	481	K - casein	AA	Longevity	109
Herds	164	Beta Casein	A2A2	Fertility	102
Rel. %	97	Beta - Lactoglobulin	AB	Feed Efficiency Index (PFE)	100
		Cheese aptitude index	n/a	BCS	98
				Grazing	107

LINEAR TRAITS

STATURE	2.83	SHORT		TALL
STRENGTH	0.97	FRAIL		STRONG
BODY DEPTH	0.43	SHALLOW		DEEP
DAIRY FORM	1.41	RIGHT RIB		OPEN RIB
RUMP ANGLE	-0.36	HIGH PINS		SLOPED
THURL WIDTH	3.13	NARROW		WIDE
CONFORMATION	2.88	UNDES		DESIRABLE
REAR LEG SET	-0.28	STRAIGHT		SICKLE
REAR LEG REAR VIEW	1.9	HOCK-IN		STRAIGHT
FOOT ANGLE	2.21	LOW		STEEP
LOCOMOTION	1.78	LOW		HIGH
FORE ATTACHMENT	4.28	FRAIL		STRONG
REAR ATT. HEIGHT	4.55	LOW		HIGH
REAR ATT. WIDTH	1.78	NARROW		WIDE
UDDER CLEFT	2.73	WEAK		STRONG
UDDER DEPTH	4.01	DEEP		SHALLOW
FRONT TEAT PLMT.	1.83	WIDE		CLOSE
REAR TEAT PLMT.	1.36	WIDE		CLOSE
TEAT LENGTH	-0.82	SHORT		LONG



GTPI +2475

NET MERIT \$ +306

USA PROOF

