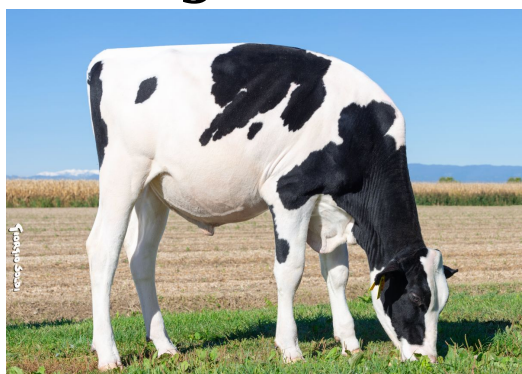


Boeing



GO-FARM BOEING

ET TL TV TY TM
 HH1C HH2F HH3F HH4F HH5F HH6F
 IT019991959147 - NAAB 198HO02225 - aAa: N.A.
HOTHAND x RECOIL x HOTROD
 1st Dam: GO-FARM BIBA ET VG 85
 2nd Dam: GO-FARM BOMBA ET VG 85



A VERY COMPLETE PROFILE THAT COMBINES PRODUCTION AND MORPHOLOGY

Milk, Fat and Protein. Type, excellent udders and feet & legs. Great milkability and low in SCS. Improver of rump angle.

USE ON: Brasileiro, Comedy, Parallel, Rally, Prince, Duko, Galactico, Glorioso, Duomilia, Miura, Nebula, Sound System, Vanhalen, Rodanas, Enterprise, Tabasco, Josuper, Supershot, Perseus, Kingboy

Last update: 2020 December

GPFT: +4446		IES: +1116		ICS-PR: +1183	
Production		Conformation		Management Traits	
Milk	+1602	Type	+3,19	Sire calving ease	111
Pr. %	+0,18	Udder comp.	+3,98	Daughter calving ease	114
Pr. kg	+73	Feet & Legs comp.	+5,15	Milking speed	104
Fat %	+0,14	Rel. %	66	SCS	110
Fat kg	+76	Milk qualities		Udder health	110
Daughters	0	K - casein	AA	Longevity	117
Herds	0	Beta Casein	A2A2	Fertility	102
Rel. %	72	Beta - Lactoglobulin	BB	Feed Efficiency Index (PFE)	100
		Cheese aptitude index	n/a	BCS	87
				Grazing	101

LINEAR TRAITS

STATURE	3.48	SHORT		TALL
STRENGTH	1.16	FRAIL		STRONG
BODY DEPTH	1.5	SHALLOW		DEEP
DAIRY FORM	3.07	RIGHT RIB		OPEN RIB
RUMP ANGLE	0.71	HIGH PINS		SLOPED
THURL WIDTH	1.02	NARROW		WIDE
CONFORMATION	3.64	UNDES		DESIRABLE
REAR LEG SET	-0.28	STRAIGHT		SICKLE
REAR LEG REAR VIEW	4.23	HOCK-IN		STRAIGHT
FOOT ANGLE	3.8	LOW		STEEP
LOCOMOTION	5.91	LOW		HIGH
FORE ATTACHMENT	4.34	FRAIL		STRONG
REAR ATT. HEIGHT	3.85	LOW		HIGH
REAR ATT. WIDTH	2.45	NARROW		WIDE
UDDER CLEFT	4.01	WEAK		STRONG
UDDER DEPTH	4.16	DEEP		SHALLOW
FRONT TEAT PLMT.	3.41	WIDE		CLOSE
REAR TEAT PLMT.	3.86	WIDE		CLOSE
TEAT LENGTH	-2.39	SHORT		LONG

GTPI +2639

NET MERIT \$ +448

USA PROOF